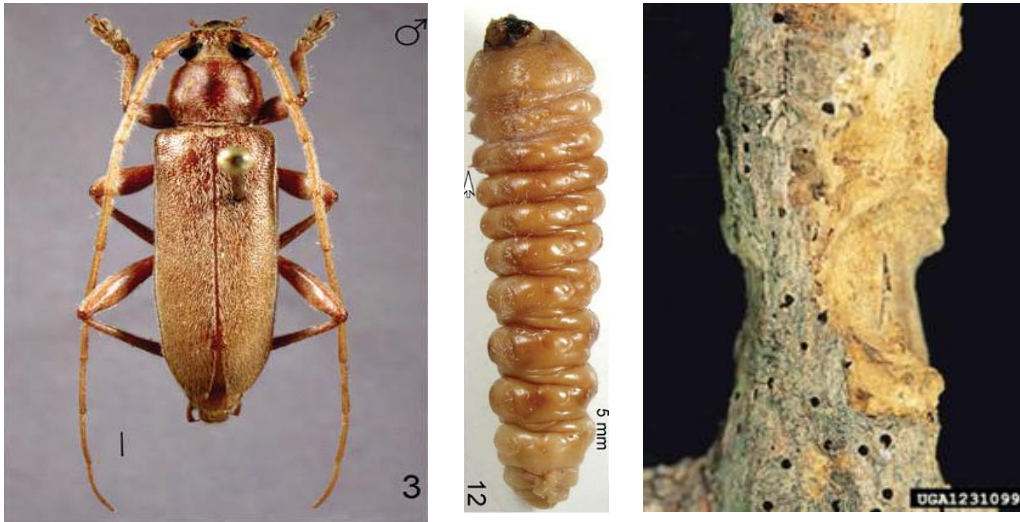


## Exotic Forest Pest Alert

### Chinese longhorned beetle, *Trichoferus campestris*

**FOUND:** In 2009 and 2010, several adult beetle of *Trichoferus campestris* were found in outdoor survey traps in both Illinois and Utah. The source of these beetles has not yet been confirmed. Trapping and inspection continues at sites near the initial detection. No regulatory response has been initiated yet. Historically, this species has been found inside warehouses associated with imported wooden pallets and crates.



The Chinese longhorned beetle *Trichoferus (Hesperophanes) campestris* is native to Asia and Russia. Female beetles lay eggs on the trunk and branches. The emerging larvae burrow under the bark, into the sapwood, and into the wood, where they grow and eventually emerge as adults. The species is known to attack a variety of deciduous host trees, from apple to willow. Larvae can also bore and develop successfully in dry logs. Port inspections have intercepted larvae of this species in wooden packing materials imported from Asia.

**Tree Symptoms :** The characteristic symptoms of infestation by *T. campestris* are: large entrance and emergence holes in tree trunks; waste from borings at the base of infested trees; peeling bark; tunnels made by large larvae. The leaves often show yellowing and wilting.

Visit <http://pest.ceris.purdue.edu/pest.php?code=INALQPA> for more details.

If you encounter this insect, or suspect a host tree with the above symptoms, please contact your local state or federal plant protection office:

In Utah: 1-801-538-7184